

Results: North American Sprint RTTY — March 2015

The 29th North American RTTY Sprint attracted more than 132 participants from 43 multipliers. Twenty meters was open for nearly 3 hours for West Coast stations, while 40 was open for the entire period, and 80 was providing contacts for East Coast stations by the end of the second hour.

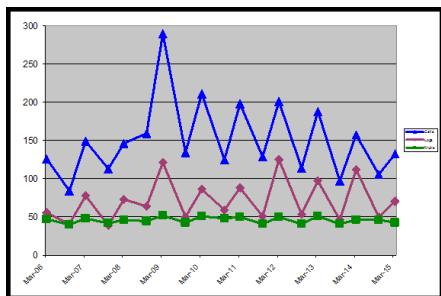
Jeff, W7RN (@ WK6I), barely squeaked by Dave, K6LL, for top honors by coaxing contacts out of just a few more rare multipliers than anyone else was able to do. Their scores were within two contacts — or one-half of a multiplier — of each other. In third place was Bud, AA3B, while Dean, NØXR, placed fourth.

Most of the Top 10 finishers were SO2R, and 9 of them were High Power this time. Mark/Mork, K6UFO, was QRO at 100 W this time and operating a remote station in New York. Eric/Einstein, K9GY, and Bob, KW8N, were operating the RTTY Sprint for the first time. In fact, this was Bob's first-ever RTTY contest!

The SWACC team, with just eight members, won the team competition. SECC and Friends came in second, ahead of NCCC Diddlers and Co, in part by fielding 10 participants to the NCCC's nine.

There were five Golden Logs. The top two, Tim, N3QE, with 157 QSOs, and Dick, K9OM, with 154, did an impressive job of maintaining accuracy.

The Fall RTTY Sprint will be September 20 UTC, avoiding a conflict with another major RTTY contest that began a few years ago on the second weekend in October, when the event had been held. The new September date is one week before the CQ World Wide RTTY Contest and will be a great warm-up for that event. Let's rally more participation.



Top 10 Scores

Call Sign	Score	Bnd Chg	Qs Lost	00Z	01Z	02Z	03Z
W7RN	6,981	87	8	56	47	33	43
K6LL	6,912	62	2	62	52	36	42
AA3B	6,402	102	1	65	42	49	38
NØXR	6,222	100	4	58	36	50	39
N6RO	5,780	80	4	54	42	31	43
N3QE	5,338	19	0	48	36	41	32
K5AM	5,248	2	3	52	41	31	40
K9OM	5,236	12	0	56	37	35	26
W1UJ	5,214	75	8	59	41	39	19
NR5M	5,120	78	7	49	41	36	34

Top 10 High Power (Max 12 Band Changes)

Call Sign	Score	Bnd Chg	Qs Lost	00Z	01Z	02Z	03Z
K5AM	5,248	2	3	52	41	31	40
K9OM	5,236	12	0	56	37	35	26
NØTA	4,500	2	14	51	36	30	33
N7NM	3,973	3	5	39	41	26	31
K3MD	3,906	6	13	31	35	29	31
KW8N	3,627	6	12	24	28	28	37
K5ZM	3,000	3	4	21	22	34	23
W6SX	2,884	2	2	44	40	1	18
K4EA	2,673	5	13	23	27	21	28
AL9A	2,520	1	7	37	27	2	24

Top 10 Low Power (Max 12 Band Changes)

Call Sign	Score	Bnd Chg	Qs Lost	00Z	01Z	02Z	03Z
K1GU	3,968	2	2	29	39	32	28
WØCO	3,741	2	2	33	33	34	29
ND8L	3,712	7	5	30	42	30	26
VE3VSM	3,078	2	4	29	32	21	32
N6EE	2,970	4	8	26	18	30	25
K4IU	2,871	6	9	0	35	25	39
AA4DD	2,781	2	1	20	25	26	32
W7OM	2,324	2	20	28	23	24	8
K6LRN	2,241	2	9	8	6	35	34
KM9R	2,052	9	15	26	25	13	12

Top 10 QSO Totals

AA3B	194
K6LL	192
NØXR	183
W7RN	179
N6RO	170
K6MR	169
K5AM	164
NR5M	160
W1UJ	158
N3QE	157

Top 10 Multipliers

W7RN	39
K6LL	36
K9OM	34
NØXR	34
N3QE	34
N6RO	34
AA3B	33
K9YC	33
W1UJ	33
K5AM	32

Top 10 Low Power Scores

W1UJ	5,214
KØYQ	4,110
WW3S	4,092
WT9U	4,089
K1GU	3,968
WØCO	3,741
ND8L	3,712
W4OC	3,612
KB1KKW	3,348
VE3VSM	3,078

Golden Logs (QSOs)

N3QE	157
K9OM	154
K4RO	36
WØBH	18
K9NW	2

Top 10 Band Changes

AA3B	102
NØXR	100
W7RN	87
N6RO	80
NR5M	78
W1UJ	75
WW4LL	71
K6MR	69
K6LL	62
WW3S	60

Top QRP Scores

WB4OMM	2,580
KU7Y	1,488
KE6K	1,071
WA8HSB	442

Single Operator Summary

Call Sign	Name	QTH	20	40	80	QSO	Mlt	Score	Bnd	Chg	Team	Call Sign	Name	QTH	20	40	80	QSO	Mlt	Score	Bnd	Chg	Team
W1UJ	*JAY	MA	55	68	35	158	33	5,214	75		SECC and Friends	K6LL	DAVE	AZ	82	71	39	192	36	6,912	62		SWACC
KB1KKW	*JAMES	MA	26	50	32	108	31	3,348	45			W7WW	DAVE	AZ	66	52	17	135	32	4,320	58		SWACC
KC1AXJ	*STEPHEN	CT	5	2	0	7	6	42	1			N7NM	DOUG	WA	55	51	31	137	29	3,973	3		
K6UFO	*MORK	NY	12	26	6	44	21	924	2		NCCC Diddlers and Co	W7WHY	TOM	OR	55	36	36	127	28	3,556	14		NCCC Diddlers and Co
N2CEC	*MIKE	NJ	24	0	0	24	14	336	0			K5ZM	IAN	OR	39	51	10	100	30	3,000	3		SECC and Friends
AA3B	BUD	PA	60	85	49	194	33	6,402	102		SWACC	K7TQ	*RANDY	ID	38	48	23	109	27	2,943	27		SWACC
N3QE	TIM	MD	48	66	43	157	34	5,338	19		SECC and Friends	AL9A	GARY	AK	66	24	0	90	28	2,520	1		SMC Spring Sprinters
WW3S	*JIM	PA	40	55	37	132	31	4,092	60			W7OM	*ROD	WA	40	39	4	83	28	2,324	2		
K3MD	JOHN	PA	40	47	39	126	31	3,906	6			KM9R	*MIKE	NV	38	28	10	76	27	2,052	9		
W3FV	BARRY	PA	29	55	37	121	29	3,509	25			AE7DW	*DON	AZ	34	31	4	69	26	1,794	4		AOCC Jailbreakers
K3PP	GLENN	PA	33	38	20	91	29	2,639	22			KU7Y	**RON	NV	32	17	13	62	24	1,488	8		NCCC Diddlers and Co
WA3ZSC	*JERRY	PA	5	21	0	26	18	468	1			N9NA	JOHN	AZ	37	18	0	55	25	1,375	1		AOCC Jailbreakers
K9OM	DICK	FL	61	63	30	154	34	5,236	12		SWACC	KE6K	**JOHN	AZ	19	18	14	51	21	1,071	4		AOCC Jailbreakers
K1GU	*NED	TN	36	46	46	128	31	3,968	2		SECC and Friends	N7JB	JIM	WA	3	5	10	18	11	198	4		
WW4LL	FRED	GA	36	48	34	118	31	3,658	71		SWACC	K7RBT	*TERI	OR	3	6	10	19	9	171	4		
W4OC	*DON	SC	40	48	41	129	28	3,612	35		SECC and Friends	ND8L	*RAY	OH	35	52	41	128	29	3,712	7		
AA4DD	*DAVE	TN	25	46	32	103	27	2,781	2			KW8N	BOB	OH	37	47	33	117	31	3,627	6		
K4EA	NEAL	GA	24	45	30	99	27	2,673	5		SECC and Friends	KD8MQ	*JOHN	OH	1	13	0	14	12	168	1		
WB4OMM	**STEVE	FL	27	37	22	86	30	2,580	7			WT9U	*JIM	IN	43	55	43	141	29	4,089	55		
N4CW	*BERT	NC	5	31	13	49	22	1,078	2			WT2P	*CJ	IL	11	52	0	63	26	1,638	3		SMC Spring Sprinters
K4RO	KIRK	TN	24	12	0	36	19	684	17			K9GY	*EINSTEIN	IL	24	37	0	61	24	1,464	1		SMC Spring Sprinters
WA8HSB	**JOHN	AL	5	21	0	26	17	442	1			WB8BZK	*MIKE	IL	1	5	0	6	6	36	1		
KM4FO	*DWIGHT	KY	2	3	0	5	6	30	2			K9NW	MIKE	IN	0	0	2	2	2	4	0		
K5AM	MARK	NM	60	72	32	164	32	5,248	2		SWACC	N0XR	DEAN	IA	52	78	53	183	34	6,222	100		SWACC
NR5M	GEO	TX	54	62	44	160	32	5,120	78		SECC and Friends	N0TA	JOHN	CO	56	54	40	150	30	4,500	2		SECC and Friends
KG5U	*DALE	TX	25	36	26	87	24	2,088	21		SECC and Friends	K0YQ	*JOHN	CO	49	54	34	137	30	4,110	24		
N6RO	KEN	CA	73	57	40	170	34	5,780	80		NCCC Diddlers and Co	W0CO	*BRAD	CO	52	35	42	129	29	3,741	2		
K6MR	KEN	CA	63	63	43	169	30	5,070	69		NCCC Diddlers and Co	K4IU	*FRED	MN	25	43	31	99	29	2,871	6		
K9YC	JIM	CA	57	53	39	149	33	4,917	27		NCCC Diddlers and Co	WG0M	*MIKE	MN	34	23	0	57	22	1,254	9		
N6EE	*RON	CA	42	42	15	99	30	2,970	4		NCCC Diddlers and Co	W0KK	*ROGER	NE	19	15	0	34	17	578	1		
W6SX	HANK	CA	47	38	18	103	28	2,884	2		NCCC Diddlers and Co	W0BH	*BOB	KS	0	3	15	18	12	216	1		
K6LRN	*DICK	CA	23	36	24	83	27	2,241	2			VE3VSM	*DAVE	ON	40	42	32	114	27	3,078	2		SECC and Friends
K6PBF	*DICK	CA	31	21	0	52	22	1,144	1			VE2NMB	MARTIN	PQ	17	35	19	71	24	1,704	2		
W7RN	TOM	NV	65	74	40	179	39	6,981	87		NCCC Diddlers and Co	VE3RCN	*KEVIN	ON	18	22	9	49	19	931	10		
												VA7JC	*JON	BC	26	0	0	26	17	442	0		
												JO7KMB	MAC	JA	9	0	0	9	9	81	0		

Team Scores

1. SWACC

K6LL 6,912
 AA3B 6,402
 N0XR 6,222
 K5AM 5,248
 K9OM 5,236
 W7WW 4,320
 WW4LL 3,658
 K7TQ 2,943
Total 40,941

2. SECC and Friends

N3QE 5,338
 W1UJ 5,214
 NR5M 5,120
 N0TA 4,500
 K1GU 3,968
 W4OC 3,612
 VE3VSM 3,078
 K5ZM 3,000
 K4EA 2,673
 KG5U 2,088
Total 38,591

3. NCCC Diddlers and Co

W7RN 6,981
 N6RO 5,780
 K6MR 5,070
 K9YC 4,917
 W7WHY 3,556
 N6EE 2,970
 W6SX 2,884
 KU7Y 1,488
 K6UFO 924
Total 34,570

4. SMC Spring Sprinters

AL9A 2,520
 WT2P 1,638
 K9GY 1,464
Total 5,622

5. AOCC Jailbreakers

AE7DW 1,794
 N9NA 1,375
 KE6K 1,071
Total 4,240