

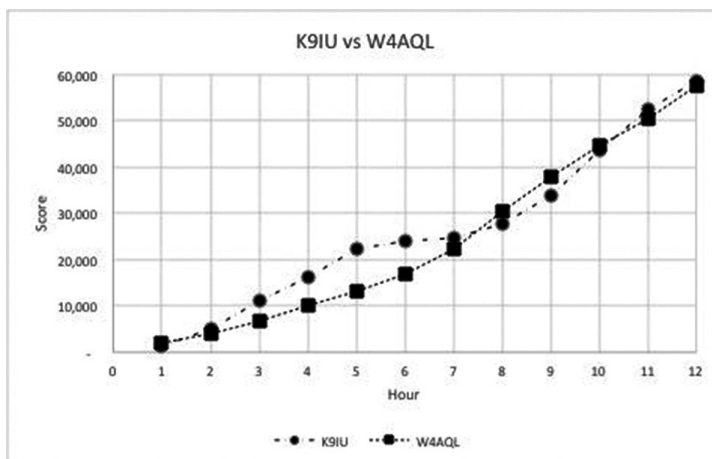
# Results: North American Collegiate Championship — January 2019

The second running of the North American Collegiate Championship (NACC) took place during the January North American QSO Party (NAQP) SSB. This event saw an increase in top scores and in the number collegiate entries. Entries almost doubled to 13 from last year's 7 entries. Five of the seven first year entrants returned for the second year.

As last year's event it was a tight race between the top two colleges. Indiana University ARC K9IU started with an early lead over Georgia Tech Amateur Radio Club W4AQL. By 2300 UTC, K9IU had a commanding lead with 22,311 points compared to 13,130 points. However just two hours later W4AQL caught up and passed the K9IU group. W4AQL maintained the lead until the last 2 hours when K9IU took the lead for the final time. The remaining 2 hours it was a tight race, ending with K9IU finishing just 965 points (raw score) ahead of W4AQL. This is roughly 25% higher than last year's top entries.

After log checking K9IU Amateur Radio Club at Indiana University earned the NACC Championship with their score of 54,060 points and 510 QSOs. Last year's champion the Georgia Institute of Technology Amateur Radio Club, finished second with a score of 52,624 points and 507 QSOs. Congratulations to both schools on their fine results.

Thanks to all participating college clubs, their advisors who coordinated the local activities, and to SMC for sponsoring the event. More details about the NACC can be found on the Society of Midwest Contesters web site, [www.w9smc.com](http://www.w9smc.com).



The "race" between K9IU and W4AQL



A shot of the K9IU team at start of contest, KD9DAB at the mic. [Courtesy of Joe Fitter, K7JOE]

Table 1 — Results of the NACC.

Call Sign	School	Score	QSOs	Mults	State	Operators
K9IU	Indiana University	54,060	510	106	IN	KD9DAB, N9VKU, plus several others
W4AQL	Georgia Institute of Technology	52,624	507	104	GA	KN8U, KM4DE, WØONA, KJ4IQA
W8UM	University of Michigan	38,900	389	100	MI	KE8AQW, N9KIT, KI7MNN
W2SZ	Rensselaer Polytechnic Institute	21,975	293	75	NY	KB6EE
W6BHZ	California Polytechnic State University	14,058	198	71	CA	KM6NPP, NW6W, N7KSW, KM6WIU
W9YB	Purdue University	8,700	174	50	IN	
W9JWC	Bradley University	8,308	124	67	IL	W9JWC, W9YES, KD9LSV
N7GAS	Utah State University	3,645	135	27	UT	KZØP
W9YT	University of Wisconsin	1,827	63	29	WI	
W8LT	The Ohio State University	1,624	56	29	OH	
K5LSU	Louisiana State University	1,537	53	29	LA	W5YUM, N4CTM, KG5VWP
W9HHX	Milwaukee School of Engineering	1,118	43	26	WI	
W8EDU	Case Western Reserve University	578	34	17	OH	W8EDU, KB3UMD