

Section 1: Install and Run Win-Test

You can download a full-featured trial copy from

http://www.win-test.com/rubrique.php3?id_rubrique=1780

This version has all the features, but randomly quits after 30 minutes to 2 hours (after which you can immediately restart and continue)

Start and set up Win-Test

Basic settings

File / New

Select contest (here CQWW DX), fill out info

Contest configuration

Station

Callsign: K0DQ Grid Square: FN19BB Exchange (zone, ...): 5 ?

DXCC Prefix: W WAZ zone: 5 ITU zone: 8 State/Province/Other: VA

Name: Scott Redd

Address: PO Box 372

Address: McLean

Address: VA, 22101

Club: PVRC - Potomac Valley Radio Club

Load

K0DQ P49Y Station 3 Station 4 Station 5

Save as

K0DQ P49Y Station 3 Station 4 Station 5

Contest

Contest: CQWW DX Days... ☐ This month only

Category: Single operator Mode: CW

Overlay: Fixed station Band plan: Default Setup...

Class: High power Power:

Operators: K0DQ

Network

Station: STN1 ☐ Enable time distribution across the network

OK Cancel

Note:

1. Exchange window should be set for transmitted exchange (follows RST). E.g. CQ Zone for CQ WW Contest, IARU Zone for IARU, State for ARRL DX, etc.

Click on OK and Win-Test will open.

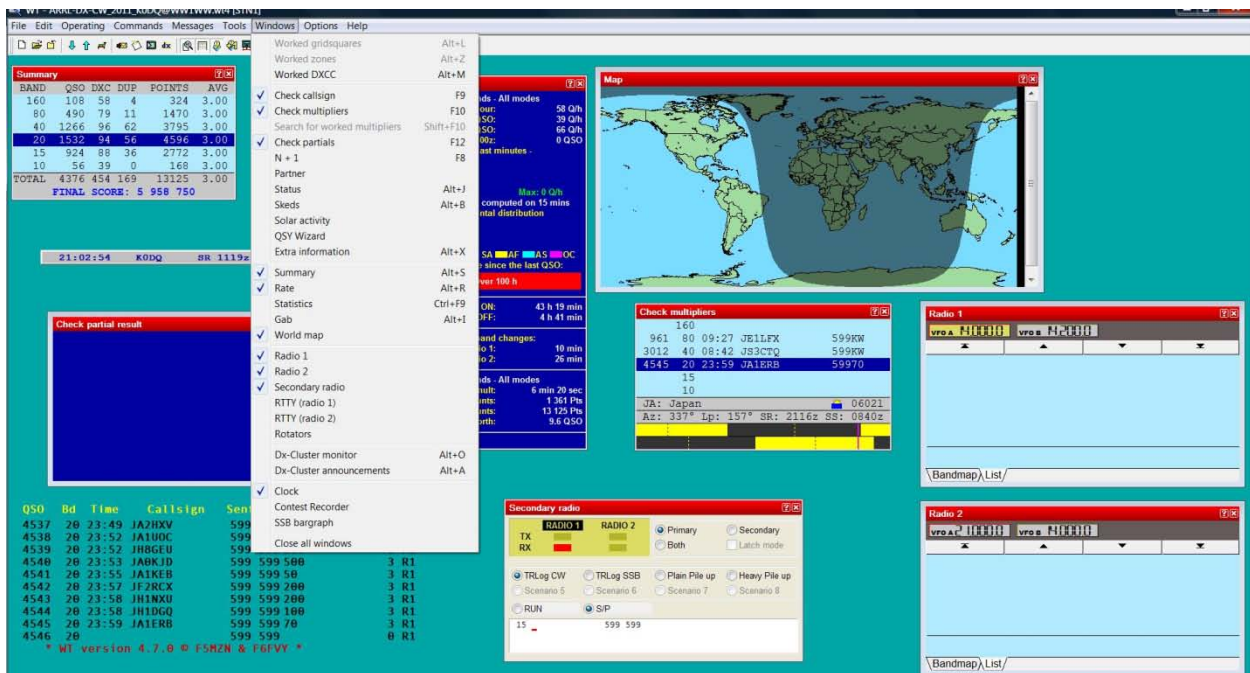
Mandatory settings

- *Operating / technique / CHECK Advanced SO2R*
- *Operating / CHECK Caps Lock binds to the secondary radio*
- *Tools / Data entry /CHECK Enable run/S&P switching*

Some optional settings

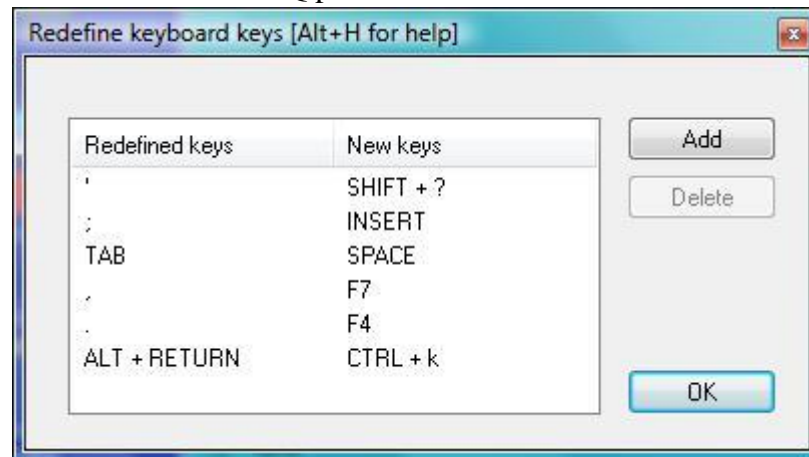
- *Tools / Data entry / Exchange guessing / CHECK Automatically*
- *Tools / Data entry / Callsign check / CHECK Automatically*
- *Tools / Data entry / CHECK Enable ESM*
- *Windows / CHECK to open each*

Everyone has a preference. This will get you started.
Note the Secondary Radio window is extremely important in SO2R



- **Tools / Data entry / Redefine keyboard keys (optional, but smart)**
 - o Click “Add” and follow instructions

K0DQ preferred redefinitions:



Notes: Goal is to keep hands on keyboard with as little movement as possible.

1. ' (apostrophe) puts “?” in call when typing in callsign window (e.g. G3?N). Note it does not SEND an ? by itself (see comma below)
2. ; (semicolon) sends call and report (INSERT)
3. TAB moves between callsign and zone/exchange field, skipping the RST field which is virtually never touched.
4. , (comma) SENDS whatever partial call is in the run callsign window and SENDS a “?” (F7). If there’s nothing in the callsign window, it simply sends a “?” Useful for narrowing pileup and for maintaining rhythm.
5. . (period) sends your callsign (useful for repeat calls in Alt-D second radio scenario) (F4)
6. Redefine ALT-ENTER as CTRL-+ (Control-Plus) (note: looks like CTRL+k in screen shot but it’s CTRL-+). This allows silent logging of QSO (i.e. log without sending CW). NOTE: This is NOT the same as TRLog which uses CTRL-ENTER for silent logging. In Win-Test, CTRL-ENTER is used to enter a call in the band map, which is sometimes useful when you want to come back to a pile up on the second radio. If you’re not interested in that, redefine CTRL-ENTER as CTRL-Plus.

SET CW Messages (mandatory)

- *Options / CW / Modify standard messages*

K0DQ preferred settings:

	Run Messages	Search & Pounce Messages
F1	\$RSTEXCHGESENT TEST \$MYCALL	TEST \$MYCALL
F2	\$SETEXCHSENT \$RST \$ZONE	\$SETEXCHSENT \$RST \$ZONE
F3	\$ZONE	\$ZONE
F4	\$MYCALL	\$MYCALL
F5	\$LOGGEDCALL	\$LOGGEDCALL
F6	TEST \$MYCALL \$MYCALL TEST	NR?
F7	\$NEXT ?	\$NEXT ?
INSERT	\$LOGGEDCALL \$GUESSEXCH \$F2	\$F2
PLUS	\$CORRECT ++TU-- \$CR \$MYCALL	\$CR

NOTES:

1. Use \$SERIAL instead of \$ZONE or whatever is appropriate for your particular contest.
2. NOTE: For contests such as ARRL DX or WPX where the exchange is NOT fairly automatic: (1) add \$TAB after \$ZONE (or \$STATE, \$SERIAL) in Run Messages F2 to automatically advance cursor to exchange field, and (2) remove "\$GUESSEXCH" from Run Messages INSERT line.
3. Run Message F6 is long CQ
4. F7 used in running pile up. If partial call in callsign window, sends that and "?" (e.g. G3 ?) If no call in window, simply sends "?"

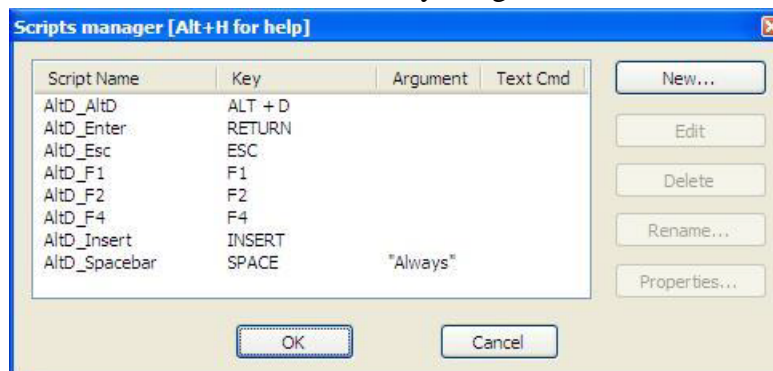
Install Scripts (Mandatory)

Download N6TV's latest desired scripts from <http://bit.ly/wtscripts> unzip/extract and save in easy access location. For this example, the AltD scripts are used. (There are others for, e.g. K3 RIT and DVK control.)

In the scripts package, open “Read me” for each set of scripts (e.g. AltD and K3) and follow installation instructions there or use the less eloquent ones below:

- In Windows Explorer, select scripts files to install, highlight and copy (e.g. AltD_AltD.wts and seven other AltD_ files)
- In Win-Test:
 - File / Explore / /scripts directory** (CLICK ON) (this opens Windows explorer to the scripts file location)
 - o Right click on ‘scripts’ file and click ‘paste’ to paste script files into scripts directory
 - o Close window
 - Tools / Scripts manager** (CLICK ON) (you’ll see pasted file names under ‘Script Name’)
 - o Highlight each file, click ‘properties’ then ‘define’ then hit key(s) for each script, then ‘OK.’

Recommended key assignments:



Notes:

1. “Always” (note upper case A and the mandatory double-quotes) means that hitting spacebar while running always sends call on second radio, even if there is a call in the run radio window.

2. If you need to delete the scripts or add updated new ones, **MANAGE ALL SCRIPTS IN THIS WINDOW, NOT BY NAVIGATING INTO THE SCRIPTS FOLDER IN WINDOWS AND ERASING FILES.**
3. **NOTE:** There are several possible nuanced changes to the scripts files, some included in the file / readme.
 - a. For example, I like to open the AltD_Spacebar file and ‘uncomment’ the “ - - rc = -1” statement at the end (i.e. change it to “rc = -1”). This has the effect of keeping the tab in the callsign window on the secondary radio until the station responds. When he does, hit TAB to move the cursor to the exchange window, enter/verify exchange, then hit ENTER to finish per above. This allows you to call again by hitting any of the following keys: F4, SPACEBAR, or ENTER and keeps from getting the cursor out of sequence if you accidentally hit SPACEBAR to call again.
 - b. Also, four of the scripts have built in 100ms delays to allow ongoing messages to stop. Those delays are hardly discernible, but they can be shortened simply by opening the scripts and editing the ‘100’ in ‘wtApp:Sleep(100)’ line to a smaller value (e.g. ‘10’) or commenting out the command with two hyphens (‘ - - wtApp:Sleep(100)’). The four scripts involved are: AltD_INSERT, AltD_ENTER, AltD_F2, and AltD_F4

Modifying the scenarios to use Alt D (Mandatory)

Set up new scenarios.

Operating / Modify the Scenarios

1. New Scenario 1: TRlogCW-Plain (for “Plain” pile up) (K0DQ preferred settings)

The screenshot shows the 'Scenarios configuration (CW)' dialog box with 'Scenario 1' selected. The 'Scenario name' is 'TRLog - Plain'. The 'Primary radio' section contains the following fields: F1: \$RESET \$R2R2 \$F1 \$RESET \$R1R2, F2: \$RESET \$R2R2 \$F2 \$R1R2, F3: \$F3, F4: \$F4, F5: \$F5, F6: \$F6, F7: \$F7, INSERT: \$RESET \$R2R2 \$INSERT \$RESET \$R1R2, and PLUS: \$RESET \$R2R2 \$PLUS \$RESET \$R1R2. The 'Secondary radio' section contains: \$TR1 \$F4 \$TR2 \$F1, \$TR1 \$F2 \$TR2 \$F1, \$F3, \$TR1 \$F4 \$TR2 \$F1, \$F5, \$F6, \$F7, \$TR1 \$F2 \$TR2 \$F1, and \$PLUS. At the bottom, there is a 'Wizard' section with buttons for 'Plain pile up', 'Heavy pile up', 'Multiplier', 'Alternate CQ', and 'Check band'. The 'OK' and 'Cancel' buttons are at the bottom right.

2. New Scenario 2: TRlogCW-Heavy (for Heavy pile up) (K0DQ preferred settings)

The screenshot shows the 'Scenarios configuration (CW)' dialog box with 'Scenario 2' selected. The 'Scenario name' is 'TRlog-Heavy'. The 'Primary radio' section contains the following fields: F1: \$RESET \$R2R2 \$F1 \$RESET \$R1R1, F2: \$RESET \$R2R2 \$F2 \$R1R1, F3: \$F3, F4: \$F4, F5: \$F5, F6: \$F6, F7: \$F7, INSERT: \$RESET \$R2R2 \$INSERT \$RESET \$R1R1, and PLUS: \$RESET \$R2R2 \$PLUS \$RESET \$R1R1. The 'Secondary radio' section contains: \$TR1 \$F4 \$TR2 \$F1, \$TR1 \$F2 \$TR2 \$F1, \$F3, \$TR1 \$F4 \$TR2 \$F1, \$F5, \$F6, \$F7, \$TR1 \$F2 \$TR2 \$F1, and \$PLUS. At the bottom, there is a 'Wizard' section with buttons for 'Plain pile up', 'Heavy pile up', 'Multiplier', 'Alternate CQ', and 'Check band'. The 'OK' and 'Cancel' buttons are at the bottom right.

Notes on scenarios:

1. The only difference between these two scenarios (plain and heavy pileup) is that in the heavy pile-up scenario both ears are on the Run Radio (except when transmitting on the run radio)
2. You must set up the scenarios separately, once for each mode, then make sure they are selected in the Secondary Radio Window. You can select scenarios by clicking on the desired one with the mouse (OK to change while operating – the change will take effect on the next cycle). You can also change scenarios by using Ctrl-Alt-1 (or AltGr-1 on European keyboard) to activate the first Advanced SO2R Scenario, Ctrl-Alt-2 (or AltGr-2) the second, etc.
3. If you do not want the automatic CQ to happen on the primary radio after pressing F1, F2, F4 or INSERT when the secondary radio window is highlighted, eliminate the "\$TR2 \$F1" from the above scenarios. In particular, to eliminate the automatic CQ on Radio 1 after calling on Radio 2 (i.e. hitting SPACEBAR), cut "\$TR2 \$F1 from F4 on Secondary Radio. To cut the automatic CQ on Radio 1 after working the station on Radio 2, cut "\$TR2 \$F1" from F2 on Secondary Radio.

Kick the tires, light the fires, and launch

That's it. Overall, it's a relatively painless effort to see if it appeals to you. If not, you're wiser and out only an hour or so of time. If you like it, maybe you too will be able to chuck that old DOS box.

Section 2: SET hardware configuration

Computer

Win-Test runs on, *inter alia*, Windows 2000, Windows XP, Windows VISTA, and Windows 7. By all reports, and personal experience, reasonably fast modern computers send CW without ‘stutter.’ There are scattered reports of computer generated sound stuttering, but not the actual CW. If in doubt, listen to your radio side tone. Slower CPU computers may require use of a WinKey or similar device. Also, on some modern laptops you’ll just get incoherent beeps from the soundcard but actual keying is OK (type “NOSOUND” in the call window to mute the computer beeps and listen to your transceiver side tone).

DX Doubler settings

Using the DX Doubler with Win-Test (with SO2Rxlat or with true LPT) is straightforward.

1. Change the configuration of the internal jumpers as follows:
 - a. Jumper 1: pins 2-3
 - b. Jumper 2: pins 5-6
 - c. Jumper 3: pins 8-9(this puts Jumpers 1 and 2 in the NA setup, Jumper 3 in the CT/TR position)
2. Put Audio and Transmit switches in “Auto” position.
3. Thanks to Denis K7GK for the above. He also notes: “In this configuration my paddle was only able to key the main radio, not the secondary radio (if selected by the Caps-Lock). I only thought of this towards the end of the contest, but this can be overcome by manually switching the TX to the second radio when using the paddle for fills.” (or by switching radios with the * key)

Options to Control DX Doubler SO2R switching

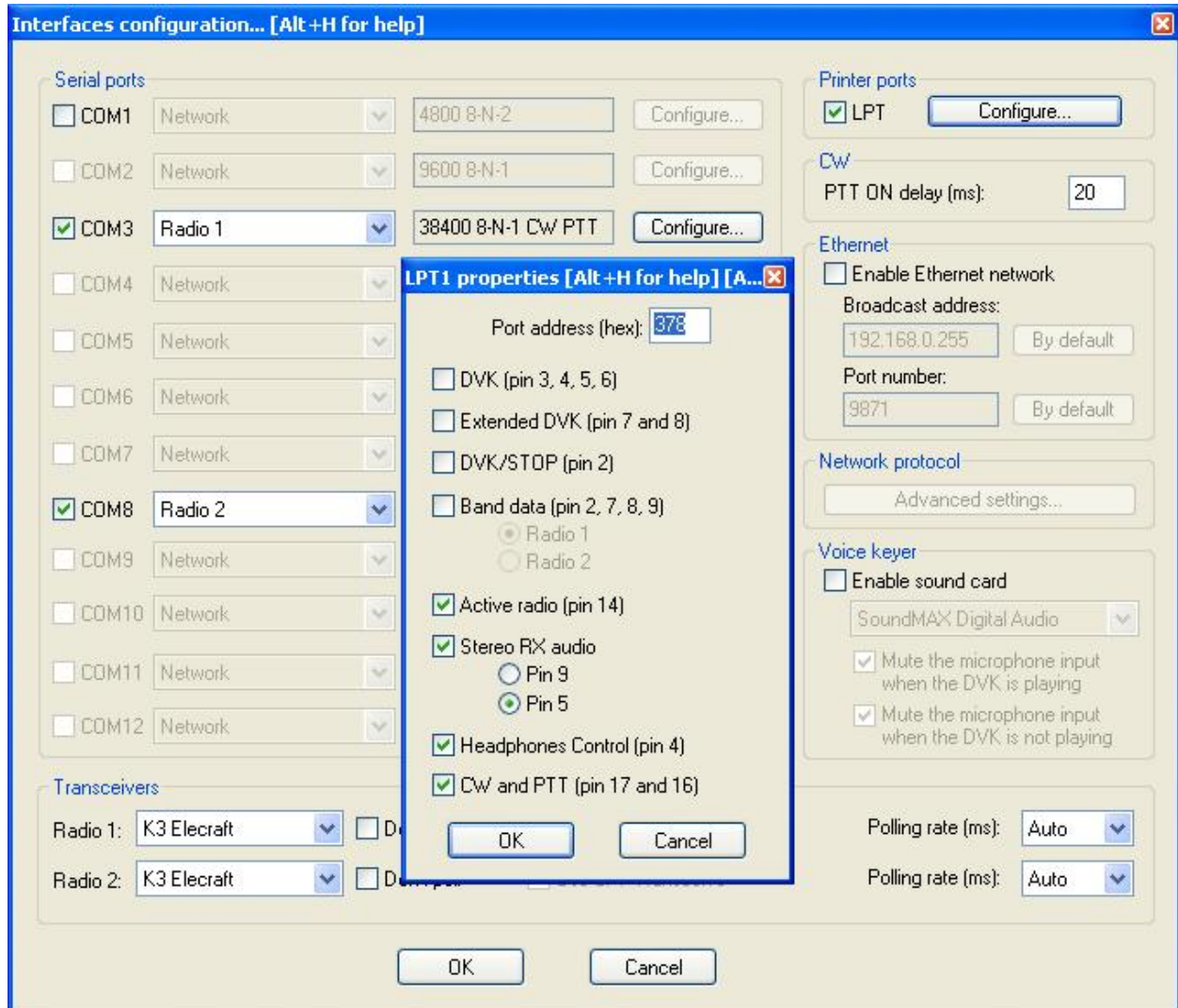
The DX Doubler relies on parallel port (LPT) signal(s) to switch headphone audio and transmitted signals from one radio to another.

Essentially, there are two ways to provide the signals: (1) a legacy LPT port (most Desktops have PCI card bays and PCI LPT ports are still available), or (2) the PIEXX SO2Rxlat device.

As noted above, while USB-to-Serial adapters are readily available and function effectively for CAT control of radios and CW, USB-to-LPT adapters do not.

Legacy LPT port setup for DX Doubler

This set up is very straightforward. In Win-Test, go to *Options / Interface Configuration /* CHECK the LPT box in upper right hand corner and click “Configure.” For CW, set up as follows:



PIEXX SO2Rxlat

A second option for controlling the DX Doubler is use of the PIEXX SO2Rxlat.

Installing the PIEXX SO2Rxlat.

- The SO2Rxlat plugs into a USB port and has two outputs: A DB-25 LPT (female) port and an outboard port (when ordering you select either DB-9/RS-232 Serial port or CI-V for ICOM radios)
- **Set the data rate** on the small pot (full clockwise for 9600 baud, full counterclockwise for 4800 baud). 9600 used in this example.
- **Plug in the SO2Rxlat** to a USB port.
- When installed the SO2Rxlat will show up as two consecutive COM ports in Windows. Normally the lowest number COM port X (1 in this example) will be set as an “OTRSP compatible device” and the second COM port X+1 (2 in this example) is set for Radio 1 or Network (Radio 1 in this example).
- For SO2R you will need at least one USB-to-Serial adapter (two if you prefer not to use the SO2Rxlat for one radio control – no reason not to). Thankfully these are readily available and DO work in CAT application (I bought several from Amazon at prices of \$8 - \$17). Many have reported better success using USB-to-Serial adapters based on the FTDI chipset rather than the Prolific chipset.
- **Set up the SO2Rxlat COM Ports in Windows**
START / Control Panel / System / Device Manager / Ports (COM and USB) (in VISTA)
 - o In this example, set COM Port 1 for 9600,8,N,1 (SO2Rxlat set for 9600) and set COM Port 2 for Radio 1 parameters (e.g. 4800,8,N,2 for Yaesu FT990).
- **Configure the SO2Rxlat, Radio 1 and Radio 2 in Win-Test:**
Options / Configure interfaces

Example 1: Setup with 2 x Elecraft K3

Overall set up – COM port usage and select radios
SO2Rxlant (COM6 and COM7) and two USB-to-Serial adapters for Radio 1 & 2 (COM9 and COM10)

Interfaces configuration... [Alt+H for help]

Serial ports

COM Port	Interface	Settings	Action
<input type="checkbox"/> COM1	Network	9600 8-N-1	Configure...
<input type="checkbox"/> COM2	Network	9600 8-N-1	Configure...
<input checked="" type="checkbox"/> COM3	Network	9600 8-N-1	Configure...
<input checked="" type="checkbox"/> COM4	Network	4800 8-N-2 CW PTT	Configure...
<input type="checkbox"/> COM5	Network	9600 8-N-1	Configure...
<input checked="" type="checkbox"/> COM6	DTRSP Compatible Dev	9600 8-N-1	Configure...
<input checked="" type="checkbox"/> COM7	Other interface...	9600 8-N-1 CW PTT	Configure...
<input type="checkbox"/> COM8	Network	9600 8-N-1	Configure...
<input checked="" type="checkbox"/> COM9	Radio 1	38400 8-N-1 CW PTT	Configure...
<input checked="" type="checkbox"/> COM10	Radio 2	38400 8-N-1 CW PTT	Configure...
<input type="checkbox"/> COM11	Network	9600 8-N-1	Configure...
<input type="checkbox"/> COM12	Network	9600 8-N-1	Configure...

Printer ports

☐ LPT Configure...

CW

PTT ON delay (ms):

Ethernet

☐ Enable Ethernet network

Broadcast address: By default

Port number: By default

Network protocol

Advanced settings...

Voice keyer

☐ Enable sound card

Speakers (Realtek High Defini

☒ Mute the microphone input when the DVK is playing

☒ Mute the microphone input when the DVK is not playing

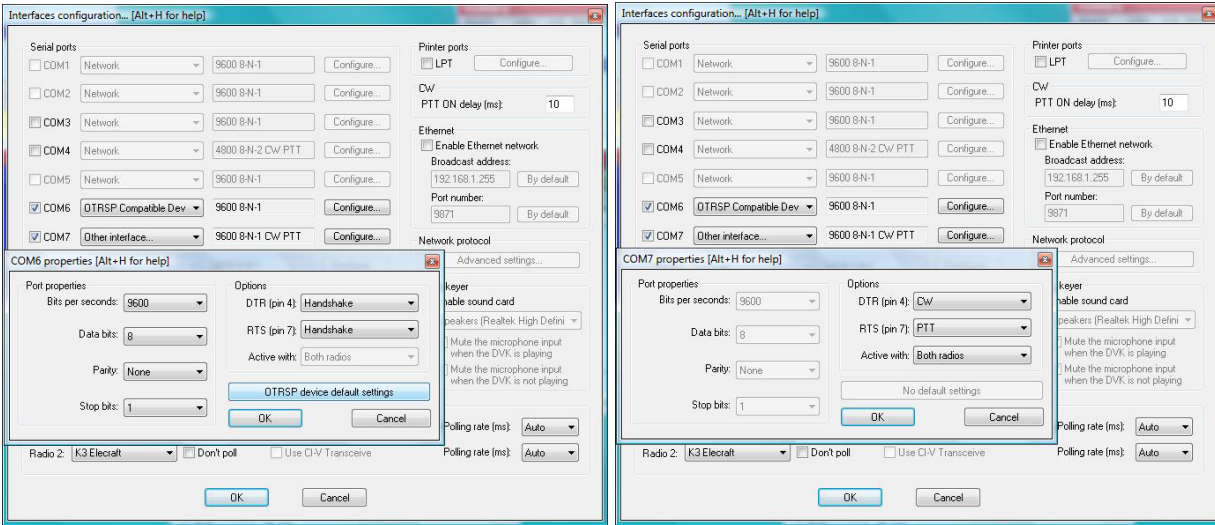
Transceivers

Radio	Model	Don't poll	Use CI-V Transceive	Polling rate (ms)
Radio 1:	K3 Elecraft	<input type="checkbox"/>	<input type="checkbox"/>	Auto
Radio 2:	K3 Elecraft	<input type="checkbox"/>	<input type="checkbox"/>	Auto

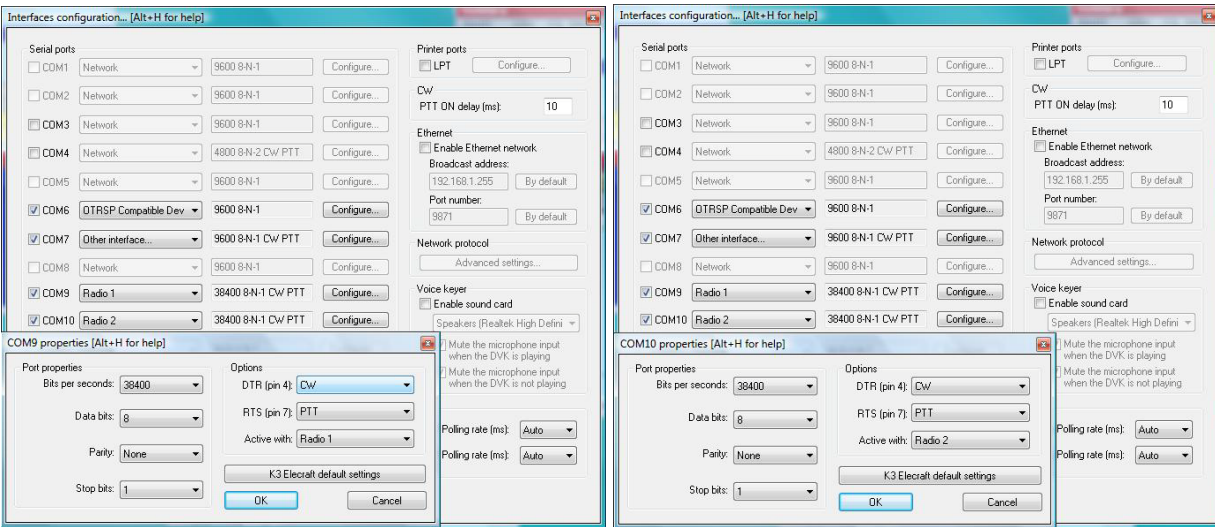
OK Cancel

Note: Even though the SO2Rxlant has an LPT-looking port, do NOT check the LPT box

SO2Rxlat configuration – First & Second COM ports (COM5 & 6 here)



2 x K3 Radio 1 & 2 Configuration (here COM 9 & 10)



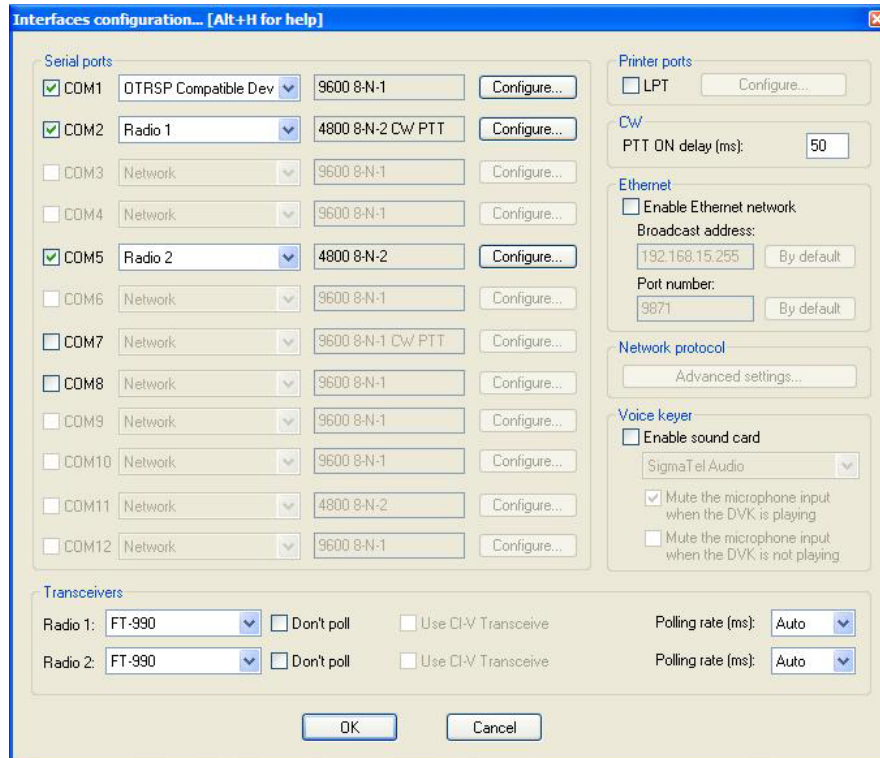
Notes:

1. With some radios (including the K3) you have the option of sending CW and PTT signals through the COM port DTR & RTS as well as through the SO2Rxlat (need to set K3 menu CONFIG:PTT-KEY to RTS-DTR). In this configuration, that is done through COMPORTS 9 & 10. DX Doubler RX/TX switching signals are sent through the SO2Rxlat in all cases.
2. If you use a conventional keyer (e.g. Logikey) for manual keying with paddles, you can route it through the DX Doubler and turn on VOX. That obviates the need for a separate PTT signal in most circumstances.

Example 2: SO2R with two FT-990, PIEXX SO2Rxlat

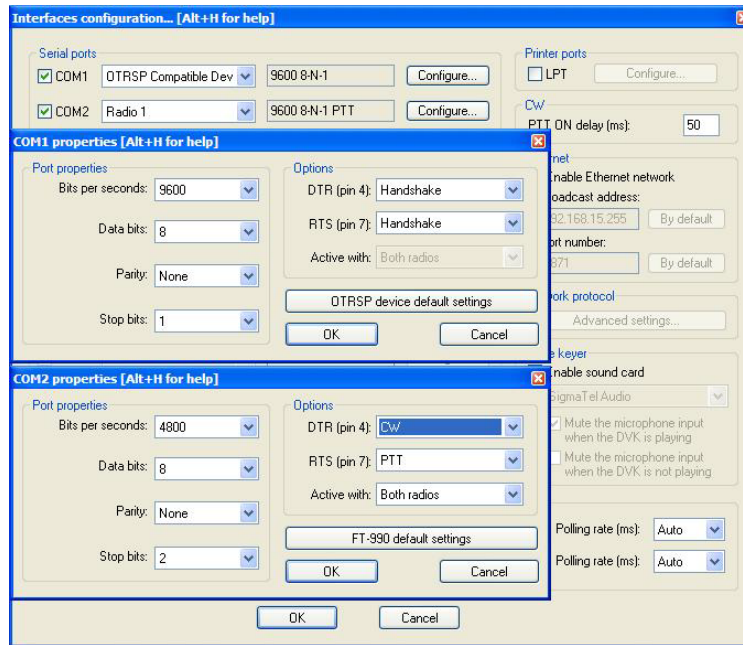
Overall set up – COM port usage and select radios
SO2Rxlat (COM1 and COM2) and one USB-to-Serial adapter for Radio 2 (COM5)

Note: This example used the second SO2Rxlat COM port (COM2) for C.A.T. of Radio 1

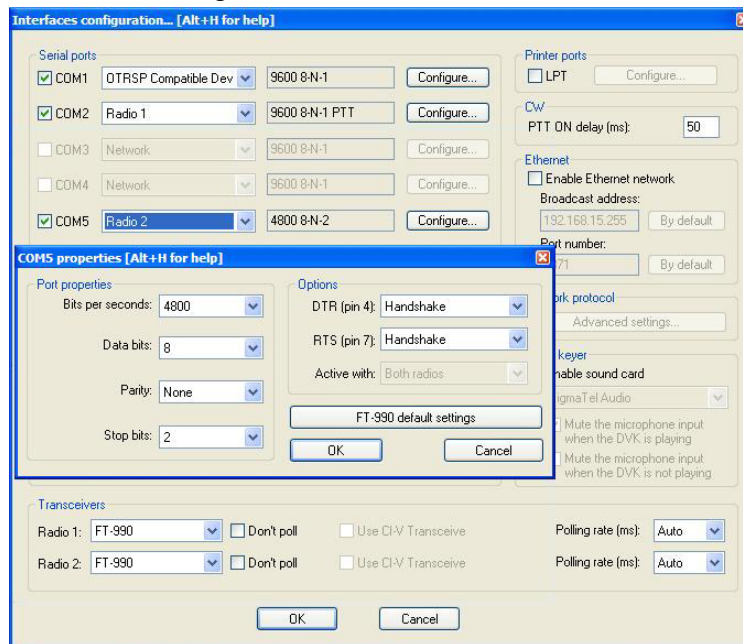


Note: Even though the SO2Rxlat has an LPT-looking port, do NOT check the LPT box

Configure COM1 and COM2 (SO2Rxlnt and Radio 1 – FT-990)



Configure Radio 2 – FT-990 (COM5)



Notes:

1. Note that the second COM port associated with the SO2Rxlnt (COM2) is set for DTR=CW and RTS=PTT. This is (always) required for the equivalent CW/PTT pins (17/16) on the DB25 “LPT” connector to function correctly.
2. For Yaesu radios (here FT-990): The default Win-Test settings have DTR and RTS set OFF, which appears to work with powered interfaces such as the FIF-232. However, use of unpowered (e.g. K1NU) interface cables may require setting DTR and RTS for “Handshake,” as shown here.

3. Of course, it is also possible to use two separate USB-to-Serial adapters to control the two radios (and not the second PIEXX SO2Rxlat port. In that case, set the SO2Rxlat second port – here COM2 – to “Other Interface” or “Network”)

Set up OTRSP Properties in Win-Test:

Options / OTRSP Configuration

OTRSP Properties...

Information
These settings apply if you have an OTRSP (Open Two RadioSwitching Protocol) Compatible Device connected, like the YCCC SO2R Box or the PIEXX SO2Rxlat USB Interface.

Options
☐ Use Events sent by the Device for PTT Synchronization (recommended if available).
PTT status must be reported for both CW and SSB whenever an external CW keyer (e.g. Winkey) or external DVK attached to (or integrated into) the OTRSP device is being used.
Vendor-specific initialization string (use semi-columns to indicate several commands if needed) :

AUX outputs
Aux #1: pins 1-4 Please refer to your SO2R interface manual in order to know which Auxiliary Ports are available.
Aux #2: pins 5-8
Aux #3: pins 9-12
Aux #4: pins 13-16
Take care not to mix AUX outputs between Radio 1 and Radio 2: all outputs lines are shared by both radios.
By convention, auxiliary port #1 contains band data for Radio 1 and auxiliary port #2 contains band data for radio 2.

Radio 1 Radio 2

AUX =>	1	2	3	4	5	6	7	8	9	10	11	12	13	14	15	16
160 m	<input type="checkbox"/>	<input type="checkbox"/>	<input type="checkbox"/>	<input type="checkbox"/>	<input type="checkbox"/>	<input type="checkbox"/>	<input type="checkbox"/>	<input type="checkbox"/>	<input type="checkbox"/>	<input type="checkbox"/>	<input type="checkbox"/>	<input type="checkbox"/>	<input type="checkbox"/>	<input type="checkbox"/>	<input type="checkbox"/>	<input type="checkbox"/>
80 m	<input type="checkbox"/>	<input type="checkbox"/>	<input type="checkbox"/>	<input type="checkbox"/>	<input type="checkbox"/>	<input type="checkbox"/>	<input type="checkbox"/>	<input type="checkbox"/>	<input type="checkbox"/>	<input type="checkbox"/>	<input type="checkbox"/>	<input type="checkbox"/>	<input type="checkbox"/>	<input type="checkbox"/>	<input type="checkbox"/>	<input type="checkbox"/>
40 m	<input type="checkbox"/>	<input type="checkbox"/>	<input type="checkbox"/>	<input type="checkbox"/>	<input type="checkbox"/>	<input type="checkbox"/>	<input type="checkbox"/>	<input type="checkbox"/>	<input type="checkbox"/>	<input type="checkbox"/>	<input type="checkbox"/>	<input type="checkbox"/>	<input type="checkbox"/>	<input type="checkbox"/>	<input type="checkbox"/>	<input type="checkbox"/>
30 m	<input type="checkbox"/>	<input type="checkbox"/>	<input type="checkbox"/>	<input type="checkbox"/>	<input type="checkbox"/>	<input type="checkbox"/>	<input type="checkbox"/>	<input type="checkbox"/>	<input type="checkbox"/>	<input type="checkbox"/>	<input type="checkbox"/>	<input type="checkbox"/>	<input type="checkbox"/>	<input type="checkbox"/>	<input type="checkbox"/>	<input type="checkbox"/>
20 m	<input type="checkbox"/>	<input type="checkbox"/>	<input type="checkbox"/>	<input type="checkbox"/>	<input type="checkbox"/>	<input type="checkbox"/>	<input type="checkbox"/>	<input type="checkbox"/>	<input type="checkbox"/>	<input type="checkbox"/>	<input type="checkbox"/>	<input type="checkbox"/>	<input type="checkbox"/>	<input type="checkbox"/>	<input type="checkbox"/>	<input type="checkbox"/>
17 m	<input type="checkbox"/>	<input type="checkbox"/>	<input type="checkbox"/>	<input type="checkbox"/>	<input type="checkbox"/>	<input type="checkbox"/>	<input type="checkbox"/>	<input type="checkbox"/>	<input type="checkbox"/>	<input type="checkbox"/>	<input type="checkbox"/>	<input type="checkbox"/>	<input type="checkbox"/>	<input type="checkbox"/>	<input type="checkbox"/>	<input type="checkbox"/>
15 m	<input type="checkbox"/>	<input type="checkbox"/>	<input type="checkbox"/>	<input type="checkbox"/>	<input type="checkbox"/>	<input type="checkbox"/>	<input type="checkbox"/>	<input type="checkbox"/>	<input type="checkbox"/>	<input type="checkbox"/>	<input type="checkbox"/>	<input type="checkbox"/>	<input type="checkbox"/>	<input type="checkbox"/>	<input type="checkbox"/>	<input type="checkbox"/>
12 m	<input type="checkbox"/>	<input type="checkbox"/>	<input type="checkbox"/>	<input type="checkbox"/>	<input type="checkbox"/>	<input type="checkbox"/>	<input type="checkbox"/>	<input type="checkbox"/>	<input type="checkbox"/>	<input type="checkbox"/>	<input type="checkbox"/>	<input type="checkbox"/>	<input type="checkbox"/>	<input type="checkbox"/>	<input type="checkbox"/>	<input type="checkbox"/>
10 m	<input type="checkbox"/>	<input type="checkbox"/>	<input type="checkbox"/>	<input type="checkbox"/>	<input type="checkbox"/>	<input type="checkbox"/>	<input type="checkbox"/>	<input type="checkbox"/>	<input type="checkbox"/>	<input type="checkbox"/>	<input type="checkbox"/>	<input type="checkbox"/>	<input type="checkbox"/>	<input type="checkbox"/>	<input type="checkbox"/>	<input type="checkbox"/>

RESET

OK Cancel

Notes:

1. No need to configure anything if you're using only computer keying.
2. I haven't used them, but if you are using a WinKeyer or outboard DVK you may need to check the Options box.
3. In that event, newer versions of the SO2Rxlat reportedly have a switch to activate the PTT feedback signal. For older versions, the PTT feedback signal is not sent through the SO2Rxlat but can be modified to do so (see next). I understand this signal is used to tell WinTest that the DVK/CW message is complete.
4. From PIEXX: For older versions of the SO2Rxlat:
 "If you plan on using the PTT and PTT feedback as Win-Test likes you will need to jumper pin 15 to 16 on the P1 connector of the SO2Rxlat. This is so the SO2Rxlat will respond to the PTT state change and provide Win-Test with this information. If you do this you will need to issue, once, the following command to the SO2Rxlat control port: "FSP10(cr)"
 This command sets up the polarities of the inputs appropriately to work with the jumper just mentioned. The install documents have been updated to describe the SO2Rxlat OSTRP protocol...."