

Figure 3. Schematic diagram of 4-1000A Chassis at W7VP

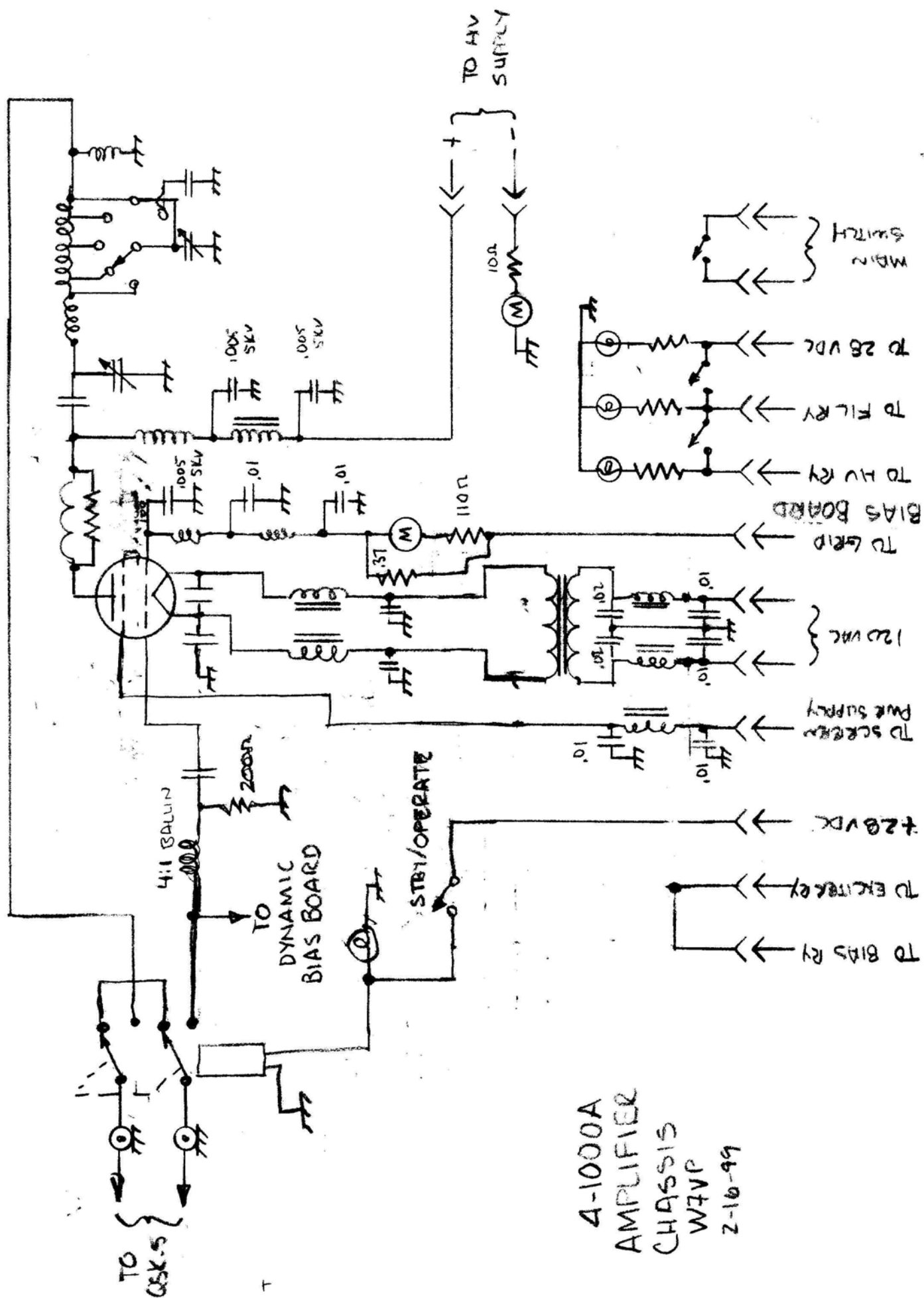


Figure 4. Schematic diagram of high voltage chassis of the 4-1000A at W7VP

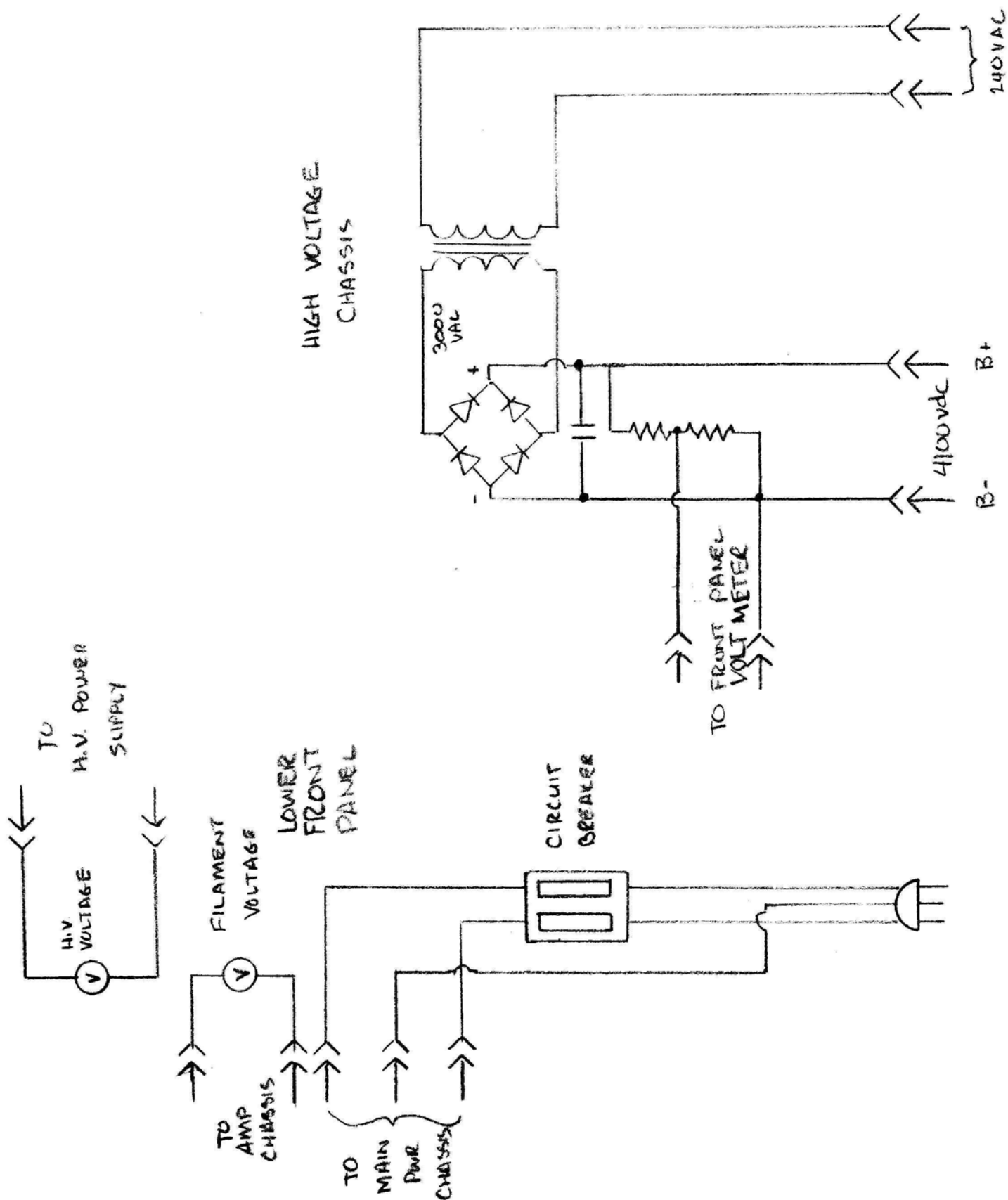


Figure 5. Schematic diagram of 4-1000A main power supply at W7VP

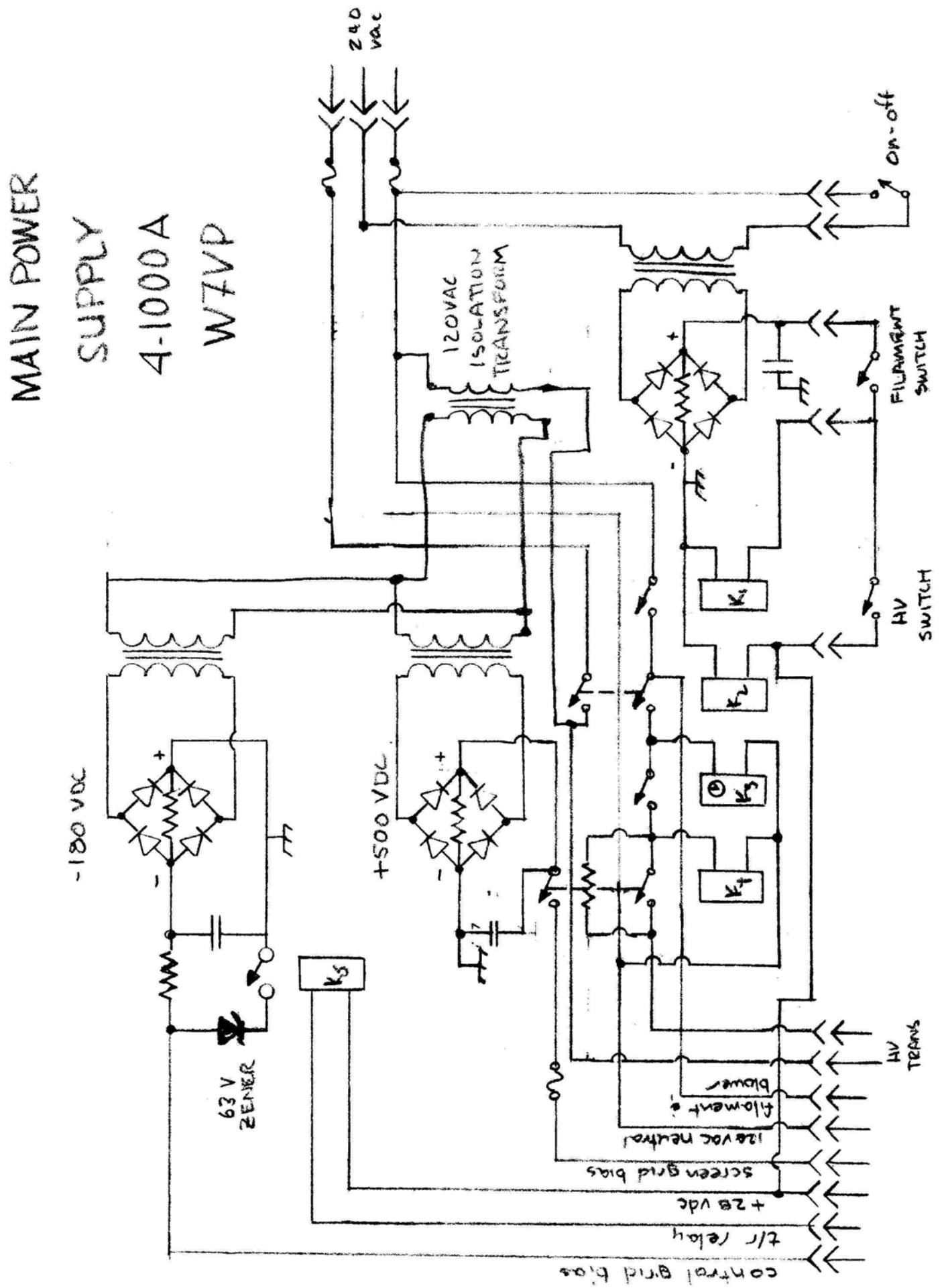
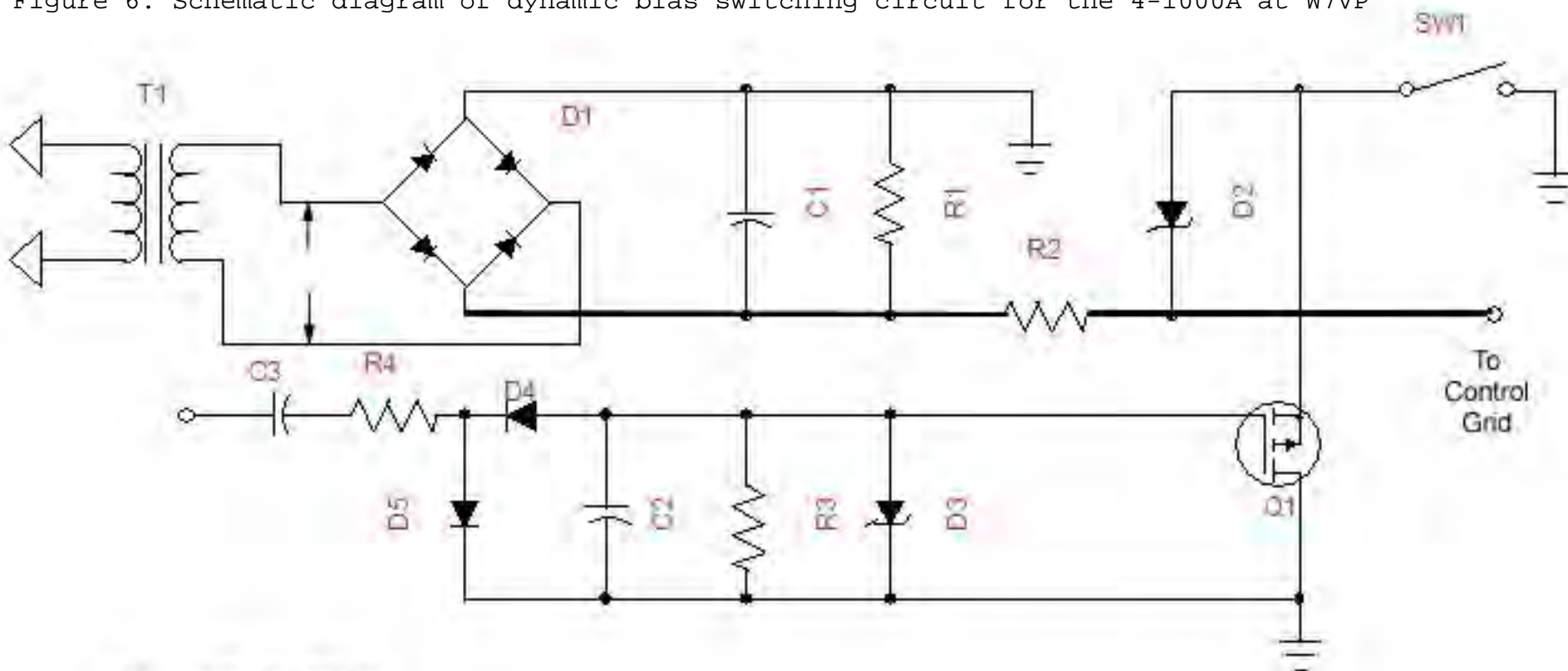
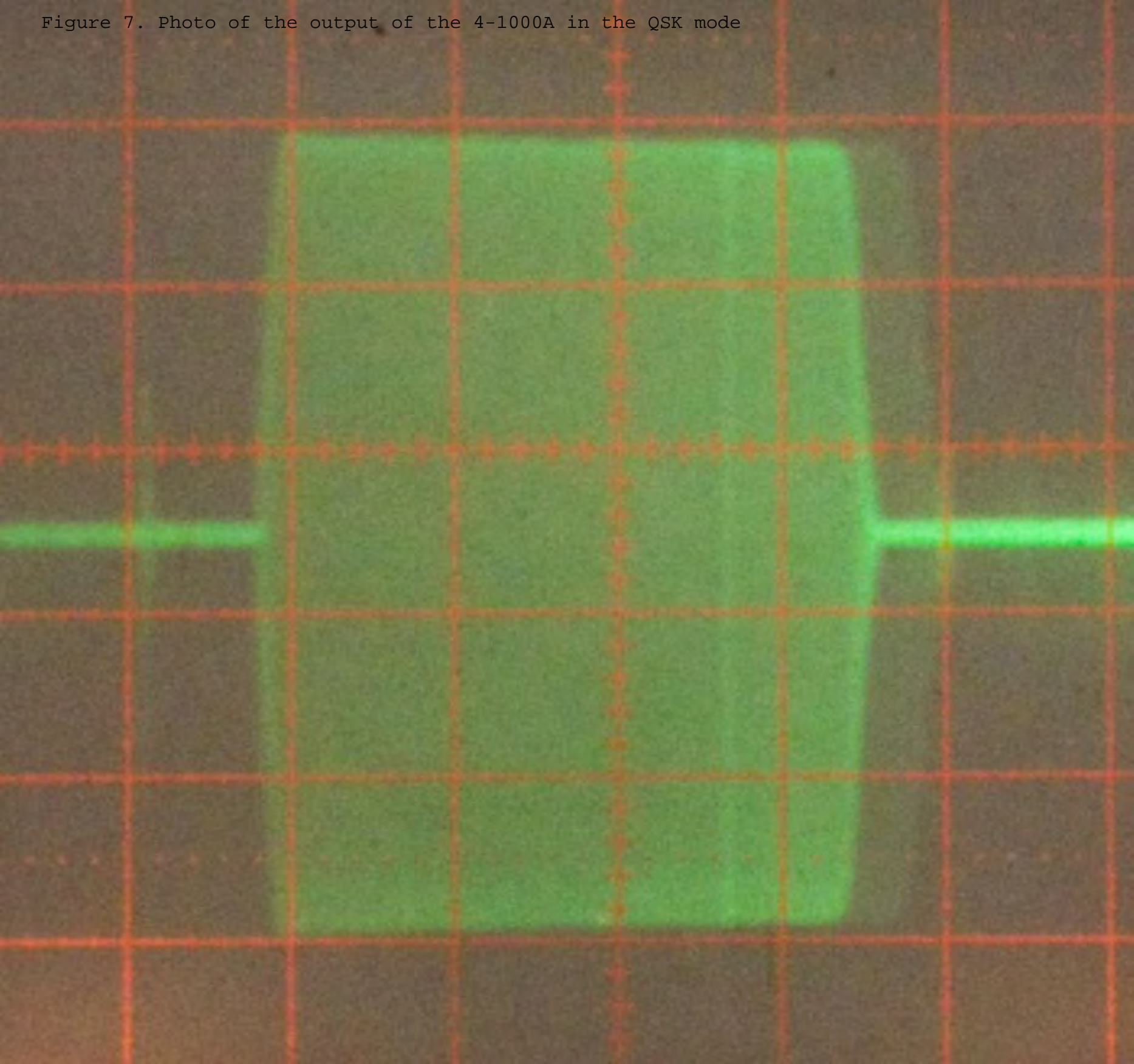


Figure 6. Schematic diagram of dynamic bias switching circuit for the 4-1000A at W7VP

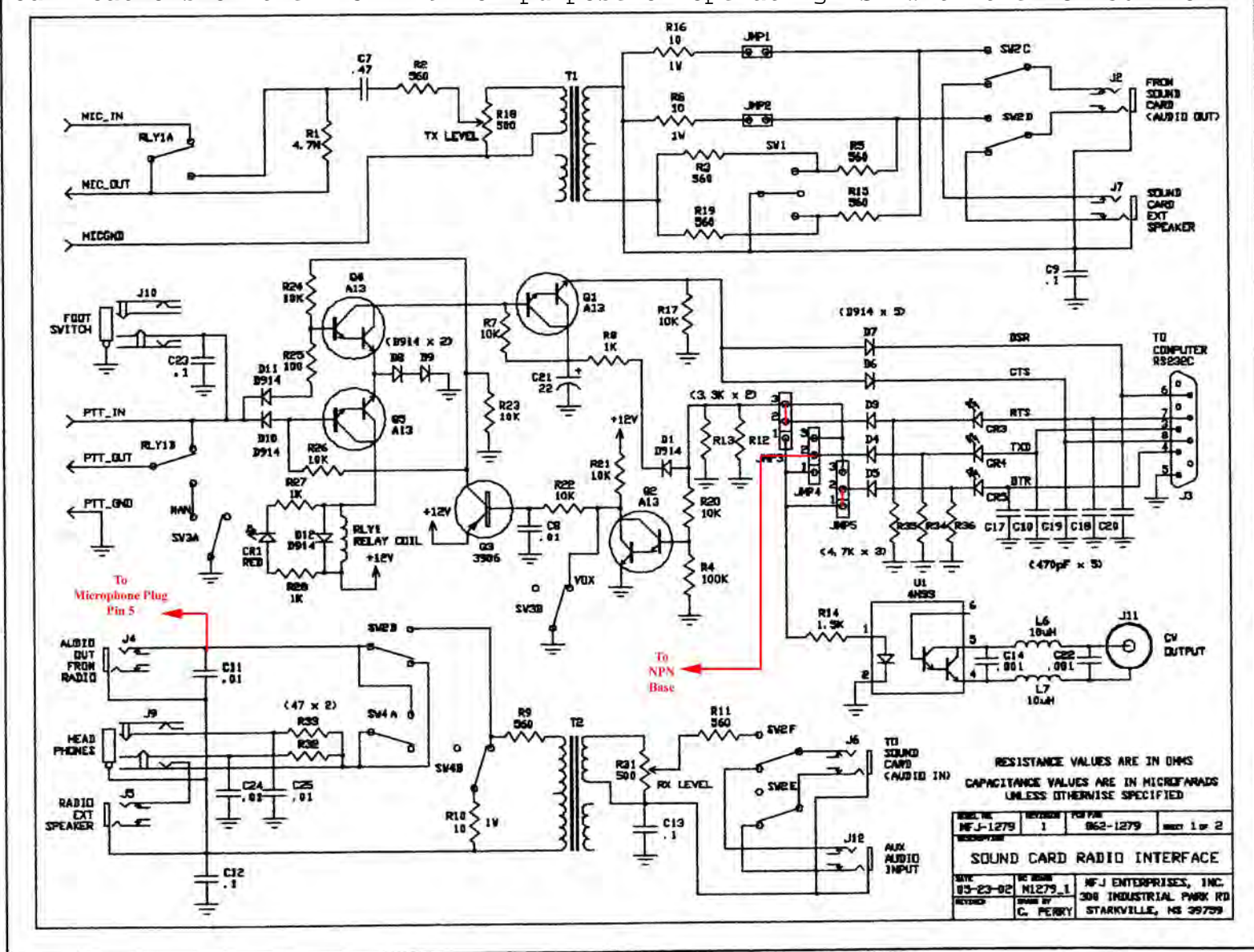


- C1 100 μ Fd 200 V
- C2 .01 μ Fd 50 V
- C3 .001 μ Fd 1000 V
- D1 Bridge Rectifier 400 V 2 amp
- D2 62 V zener
- D3 17 V zener
- D4 D5 1N34
- Q1 NTE 2831 P-Ch Enhancement Mode
High Speed Switch
- R1 25k 10 W
- R2 3k 10 W
- R3 470K $\frac{1}{4}$ W
- R4 4.7K 10W MOX
- S1 SPST Switch
- T1 120 VAC Isolation Transformer

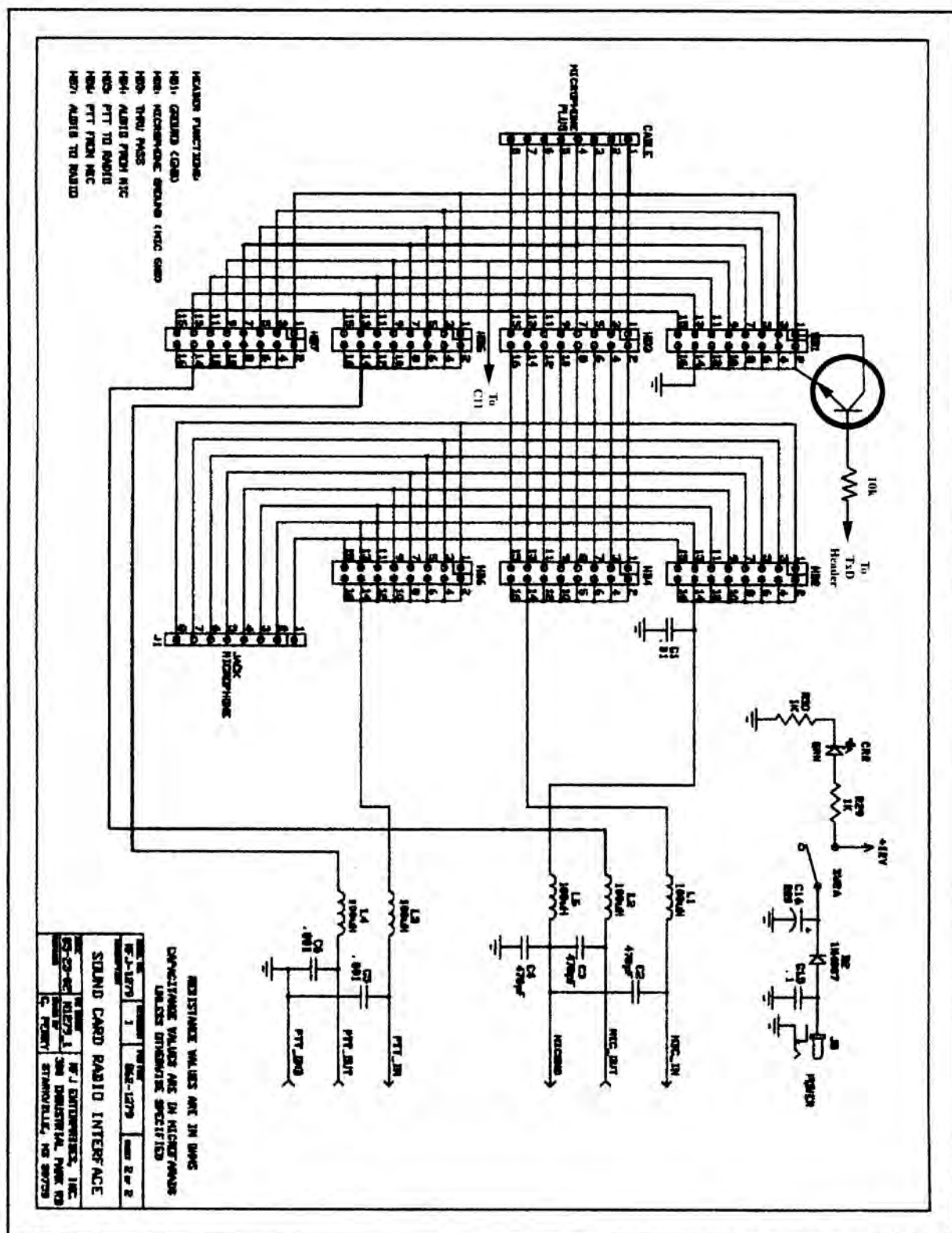
Figure 7. Photo of the output of the 4-1000A in the QSK mode



17



18



דביוויג סטיווארט רתום זמחום זאובולח

[illegible]